

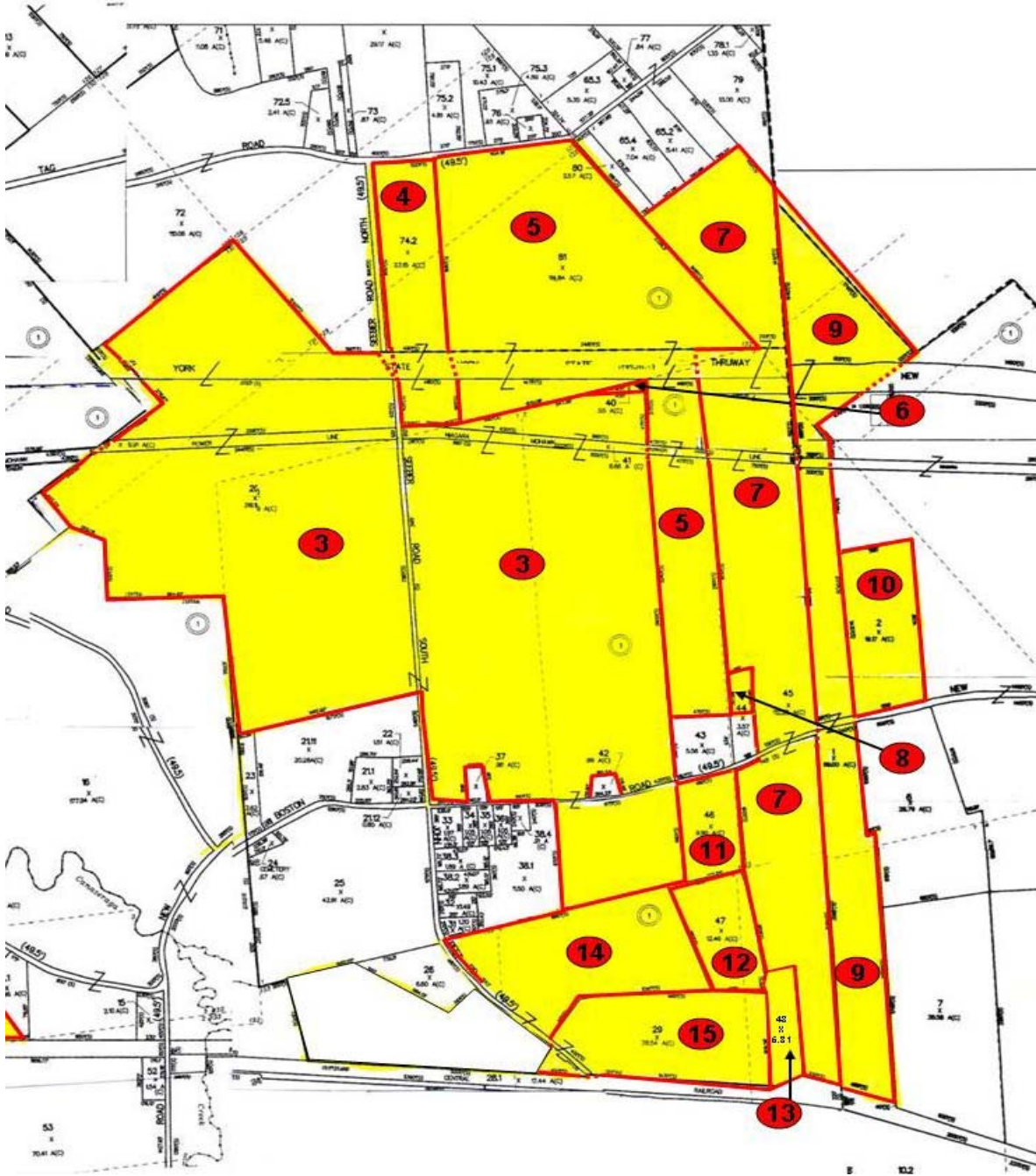
Boston Road Farms, LLC

Property Identification

Total of 780.04 +/- acre group on John Peet Road, Gee Road, New Boston Road and Seeber Road; (numbers 3-15 on Tax Map)

Vacant Land			
Parcel #	Tax ID		
4	26.-1-74.2	23.15 Acres+/-	
5	26.-1-81	114.84 Acres+/-	
6	34.-1-40	0.55 Acres+/-	
8	34.-1-44.2	1.36 Acres+/-	
9	35.-1-1	69 Acres+/-	
12	34.-1-47	12.46 Acres+/-	
13	34.-1-48	5.61 Acres+/-	
15	34.-1-29	28.54 Acres+/-	
Land with Improvements			
	Tax ID		
3	34.-1-20	319.19 Acres+/-	1992 sq/ft+/- house 280 sq/ft+/- garage 864 sq/ft+/- barn
7	34.-1-45	112.28 Acres+/-	462 sq/ft+/- garage 2040 sq/ft+/- barn 1650 sq/ft+/- barn 1632 sq/ft+/- barn 600 sq/ft+/- machine shed 768 sq/ft+/- machine shed 600 sq/ft+/- silo
10	35.-1-2	19.17 Acres+/-	1643 sq/ft+/- house 440 sq/ft+/- garage 960 sq/ft+/- barn 182 sq/ft+/- machine shed
11	34.-1-46	9.9 Acres+/-	1056 sq/ft+/- barn
14	34.-1-30	39.99 Acres+/-	1100 sq/ft+/- house 1260 sq/ft+/- barn 136 sq/ft+/- machine shed

Boston Road Farms, LLC



Boston Road Farms, LLC



1,100 ± SF Free Stall Facility and Milk Parlor



Dairy Farm-Milk Parlor

Boston Road Farms, LLC



Dairy Support Buildings



1,100 ± SF Free Stall Barn

Boston Road Farms, LLC



Milk Tanks



Double 30 Milkers

Boston Road Farms, LLC



Natural Gas Pipeline-South of Subject Property



Seeber Road Looking North

Boston Road Farms, LLC



Flat, Tillable Land