

Large Commercial Building for Sale

Property Highlights

- 9,310 SF on 0.81 Acres
- Located in heart of Lansing Commercial District.
- Former Supermarket with concrete floor.
- 16'+/- ceilings.
- Drive-in 15' x 15' truck level door.
- New bathroom.
- Lots of on site parking.
- Highly visible / accessible location.
- Completely open floor plan.
- Allows for flexibility of multiple uses.

For more information, contact:

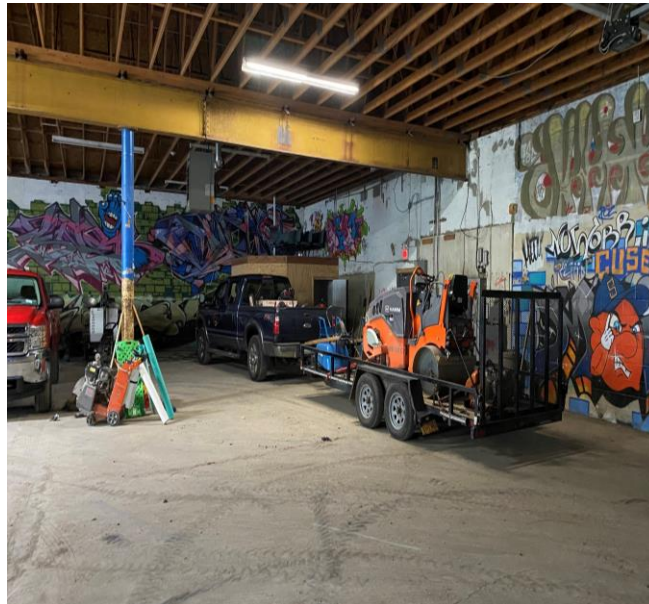
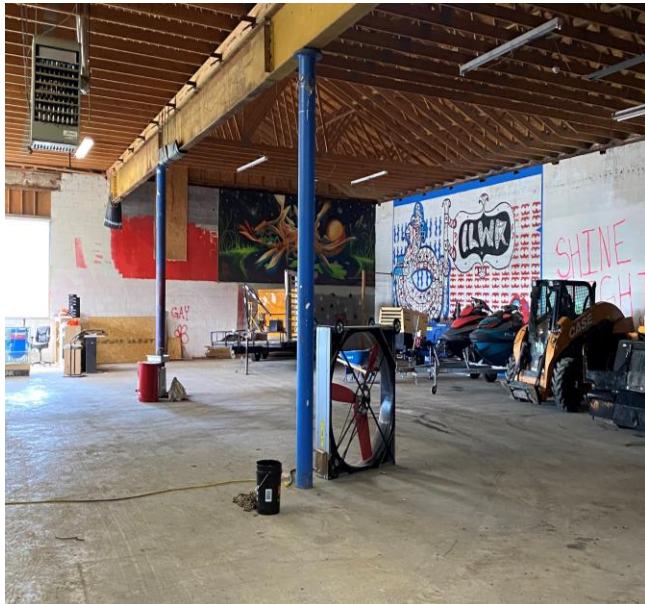
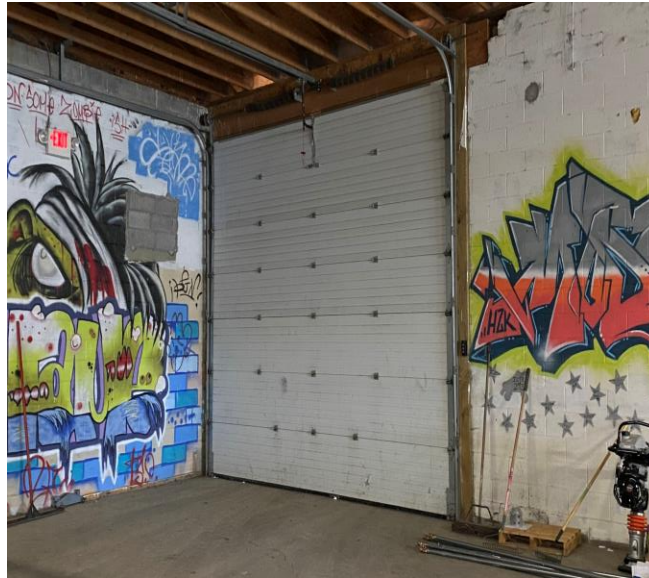
David Huckle
Associate Real Estate Broker
607 227 7558
dhuckle@pyramidbrokerage.com

Gateway Center, 401 East State Street, Suite 302
Ithaca, New York 14850
phone: +1 607 277-2327

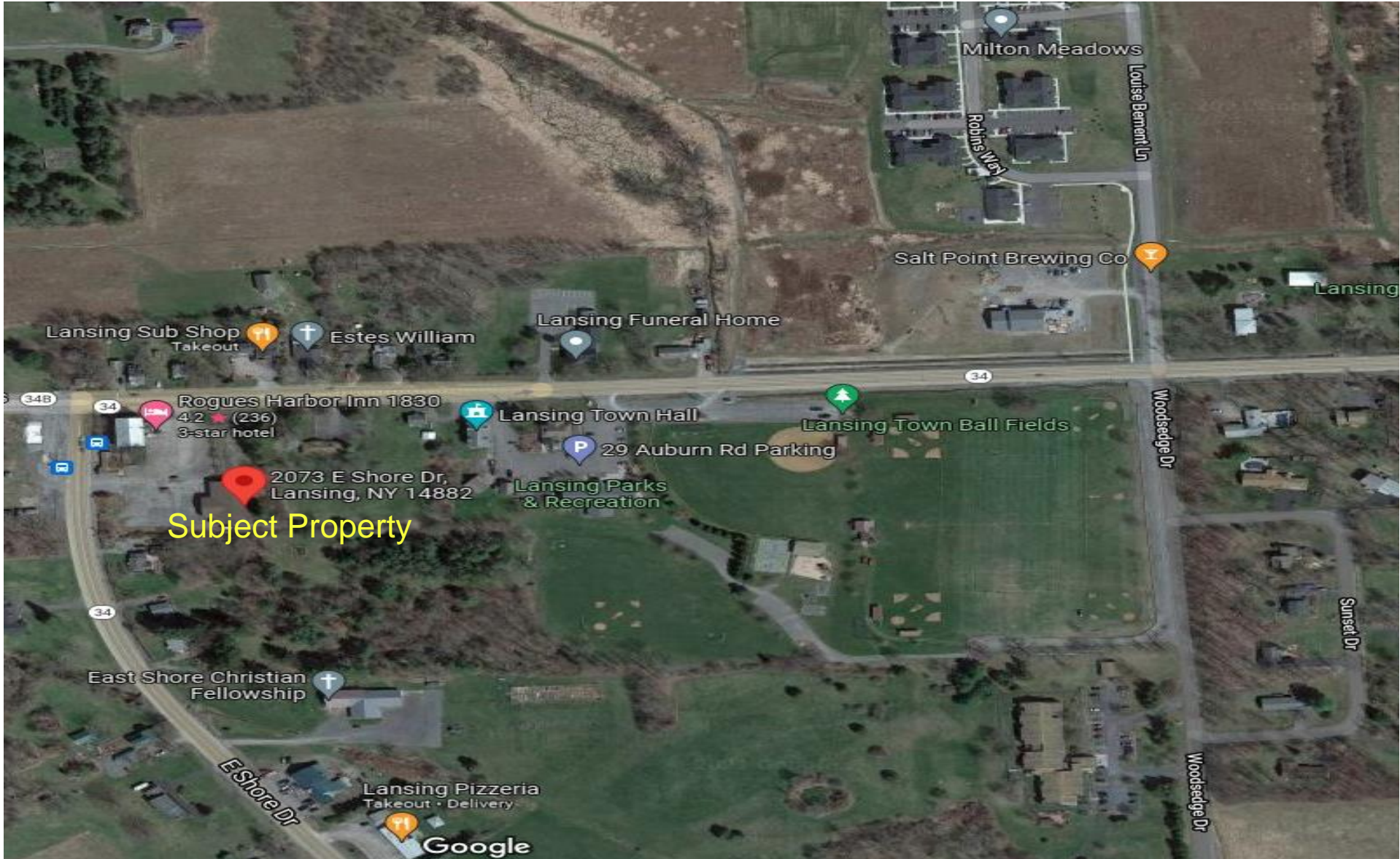
pyramidbrokerage.com



FOR SALE
2073 East Shore Drive
Lansing, NY



FOR SALE
2073 East Shore Drive
Lansing, NY



FOR SALE
2073 East Shore Drive
Lansing, NY

