

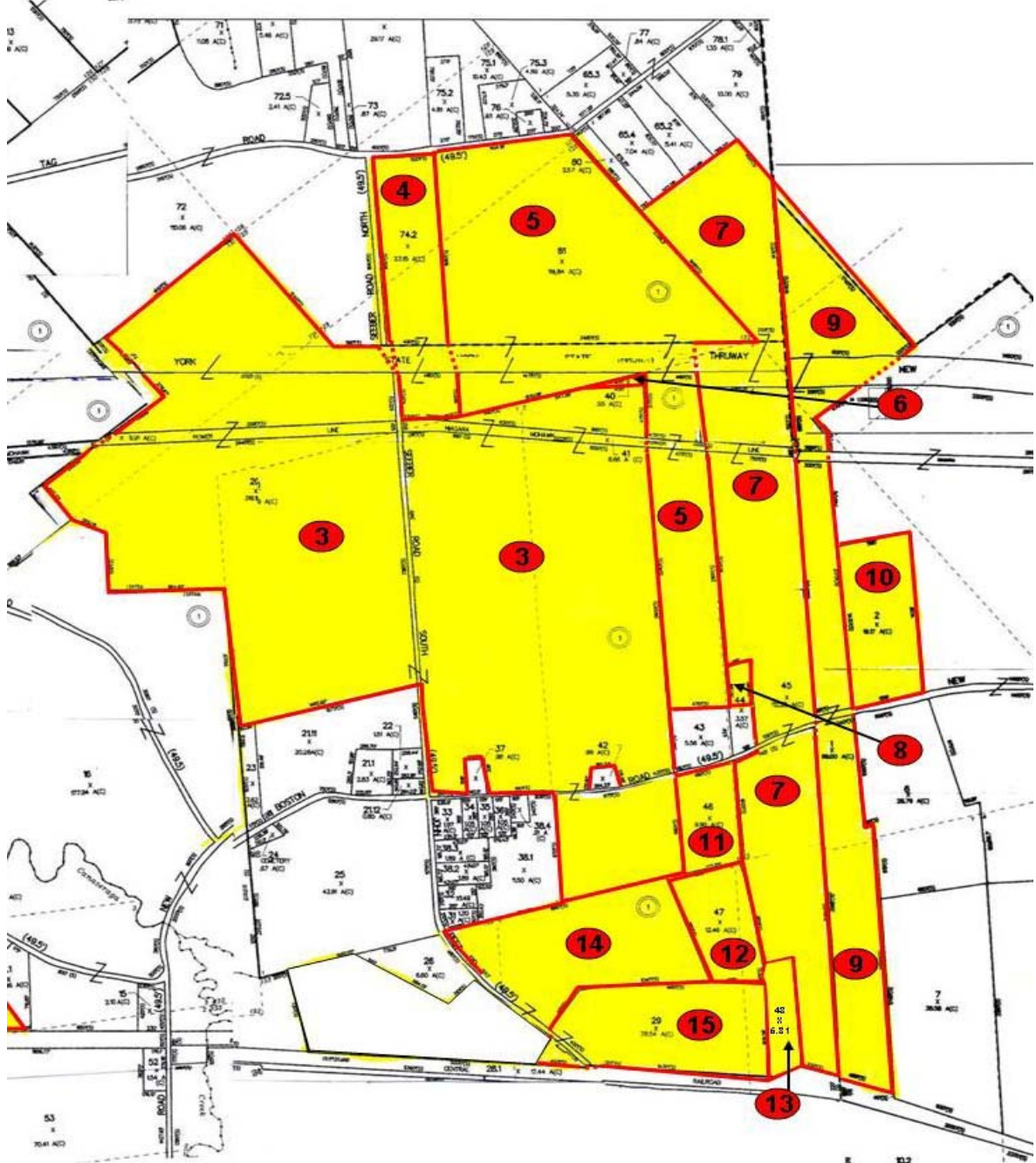
## Boston Road Farms, LLC

### Property Identification

Total of 780.04 +/- acre group on John Peet Road, Gee Road, New Boston Road and Seeber Road; (numbers 3-15 on Tax Map)

Parcel #	Vacant Land	
	Tax ID	
4	26.-1-74.2	23.15 Acres+/-
5	26.-1-81	114.84 Acres+/-
6	34.-1-40	0.55 Acres+/-
8	34.-1-44.2	1.36 Acres+/-
9	35.-1-1	69 Acres+/-
12	34.-1-47	12.46 Acres+/-
13	34.-1-48	5.61 Acres+/-
15	34.-1-29	28.54 Acres+/-
<b>Land with Improvements</b>		
	<b>Tax ID</b>	
3	34.-1-20	319.19 Acres+/- 1992 sq/ft+/- house 280 sq/ft+/- garage 864 sq/ft+/- barn
7	34.-1-45	112.28 Acres+/- 462 sq/ft+/- garage 2040 sq/ft+/- barn 1650 sq/ft+/- barn 1632 sq/ft+/- barn 600 sq/ft+/- machine shed 768 sq/ft+/- machine shed 600 sq/ft+/- silo
10	35.-1-2	19.17 Acres+/- 1643 sq/ft+/- house 440 sq/ft+/- garage 960 sq/ft+/- barn 182 sq/ft+/- machine shed
11	34.-1-46	9.9 Acres+/- 1056 sq/ft+/- barn
14	34.-1-30	39.99 Acres+/- 1100 sq/ft+/- house 1260 sq/ft+/- barn 136 sq/ft+/- machine shed

# Boston Road Farms, LLC



**Boston Road Farms, LLC**

---



**1,100 ± SF Free Stall Facility and Milk Parlor**



**Dairy Farm-Milk Parlor**

**Boston Road Farms, LLC**

---



**Dairy Support Buildings**



**1,100 ± SF Free Stall Barn**

**Boston Road Farms, LLC**

---



**Milk Tanks**



**Double 30 Milkers**

**Boston Road Farms, LLC**

---



**Natural Gas Pipeline-South of Subject Property**



**Seeber Road Looking North**

**Boston Road Farms, LLC**

---



**Flat, Tillable Land**