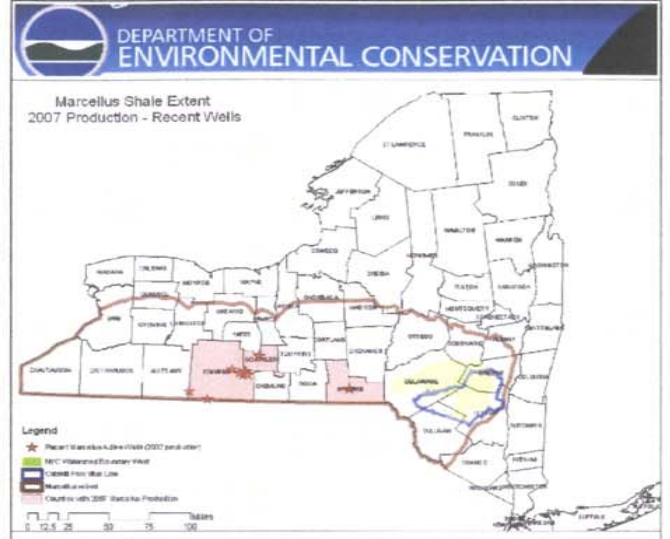


**Bedrock Geology/  
Gas and Oil Well Status  
Madison County, NY  
July 2008**

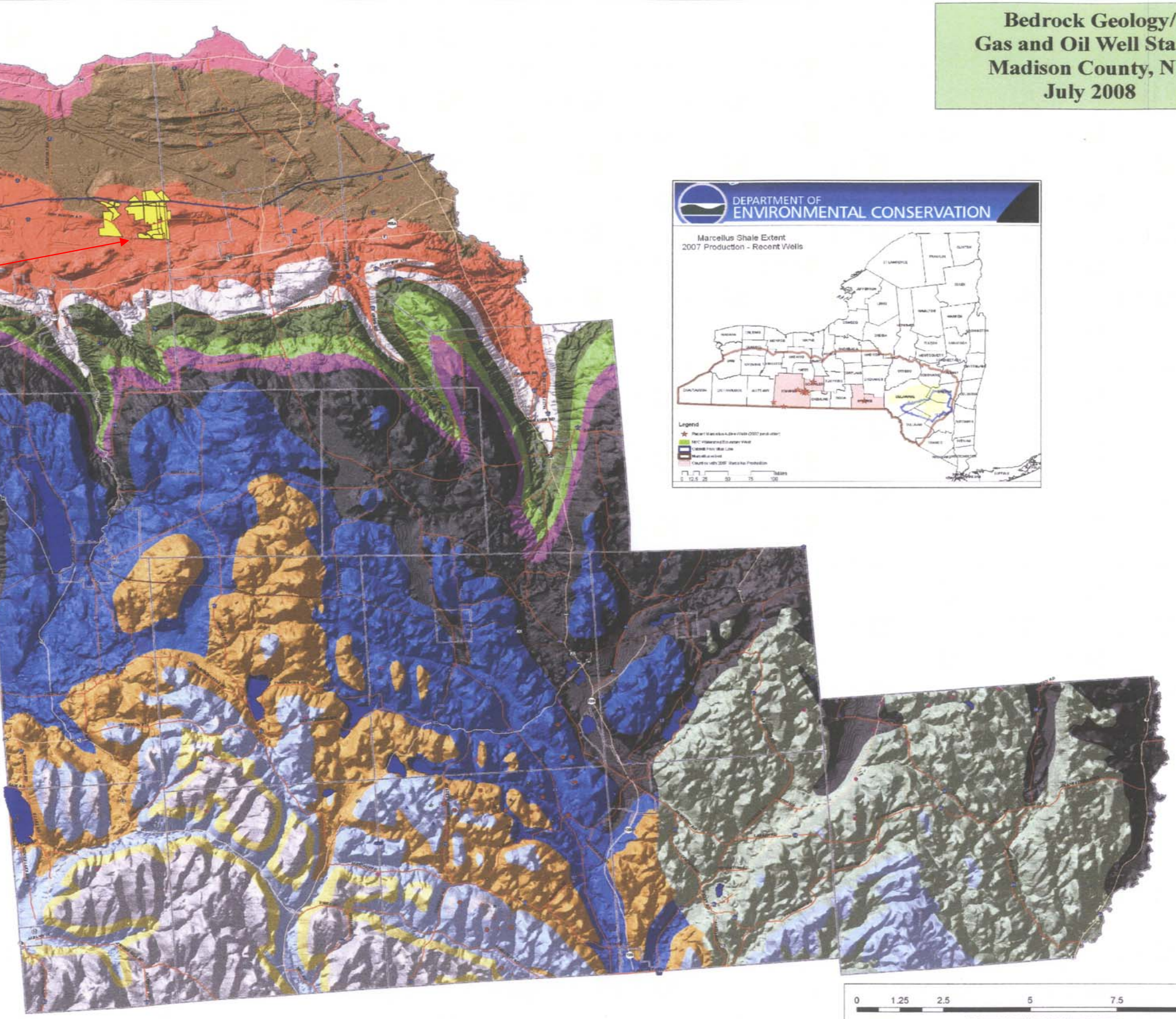
**SITE**



M. DEV.	Hamilton Grp.	Tully limestone
	Onondaga	Moscow shale
		Lucasville shale
		Skaneateles shale
		Marcellus shale
		Onondaga limestone

**Legend**

<p><b>Well Type - July 2006</b></p> <ul style="list-style-type: none"> <li>● Confidential</li> <li>▲ Dry Hole</li> <li>● Dry Wildcat Well</li> <li>● Gas Development Well</li> <li>● Gas Extension Well</li> <li>● Wildcat Gas Well</li> <li>● Not Listed</li> </ul> <p><b>Roads</b></p> <p><b>Road Type</b></p> <ul style="list-style-type: none"> <li>— US Highway</li> <li>— Interstate</li> <li>— State Highway</li> <li>— County Highway</li> <li>— Boston Road Farms</li> <li>— Waterbodies</li> <li>— Municipal Boundaries</li> </ul>	<p><b>Bedrock Geology</b></p> <p><b>CODE</b></p> <ul style="list-style-type: none"> <li>■ Rochester Shale</li> <li>■ Genesee Dolomite</li> <li>■ Venon Formation</li> <li>■ Syracuse Formation</li> <li>■ Cobleskill Limestone</li> <li>■ Post Ewen Formation</li> <li>■ Onondaga Limestone</li> <li>■ Marcellus Formation</li> <li>■ Skaneateles Formation</li> <li>■ Lucasville Formation</li> <li>■ Feather Mountain Formation</li> <li>■ Moscow Formation</li> <li>■ Tully Limestone</li> <li>■ West River Shale</li> <li>■ Water</li> </ul>
--	--



0 1.25 2.5 5 7.5 10 Miles  
Map Prepared by the Madison County Planning Department