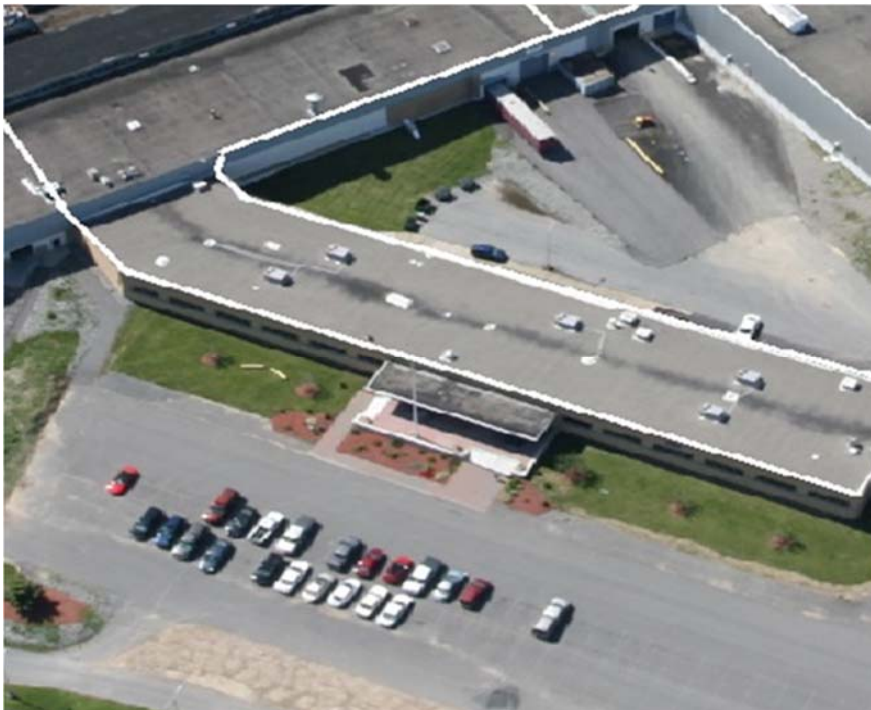


I GENERAL MOTORS DR SYRACUSE, NEW YORK 13206

OFFICE FOR LEASE
8,011 – 39,800± SF



SALINA INDUSTRIAL POWERPARK



PROPERTY FEATURES

- Fiber Optics (FIOS, TWC, Level3)
- Efficient, Sustainable Mechanicals
- Low Cost Utilities
- ADA Certified with Elevator
- 7 Car per 1,000 SF Parking
- 30 Ton HVAC
- Insulated Foam Roof
- 60' Clear Span Construction
- You choose Carpet and Color
- Occupy within 30 Days of Lease Execution

Private offices combine with ample open bull pen space, modern kitchenette and welcoming reception area to serve your office workforce and visitors. Superb natural light from modern insulated window walls compliment the extraordinary presence, easy access and extensive dedicated parking of this premier office location.

For more information, please contact:

JOHN L. CLARK, SIOR, CRE
President, Real Estate Broker
(315) 445 8509
jclark@pyramidbrokerage.com

PAUL B. MACKEY
Real Estate Salesperson
(315) 382 8700
pmackey@pyramidbrokerage.com

JONATHAN T. SAYRE
Associate Real Estate Broker
(315) 736 0856
jsayre@pyramidbrokerage.com

PYRAMID BROKERAGE COMPANY
5786 Widewaters Pkwy.
PO Box 3
Syracuse, NY 13214
(315) 445-1030 • Fax: (315) 445-2074
pyramidbrokerage.com

No warranty or representation, express or implied, is made as to the accuracy of the information contained herein, and same is submitted subject to errors omissions, change of price, rental or other conditions, withdrawal without notice and to any specific listing conditions, imposed by our principals.

I GENERAL MOTORS DRIVE

Office for Lease

8,011 ± SF
AVAILABLE



FLOOR PLAN

THE SPACE DEPICTED HERE IS 8,011 SF AND CAN BE MODIFIED TO MEET YOUR PREFERENCES UP TO 19,500 SF ON A SINGLE FLOOR.



PLANNING AN OFFICE MOVE? HAVE THE OFFICE MOVE GO AS PLANNED! SALINA INDUSTRIAL POWERPARK PROVIDES FULL SERVICE, TURN-KEY, OPTIONS IN A PERFECT LOCATION!

For more information, please contact:

JOHN L. CLARK, SIOR, CRE
President, Real Estate Broker
(315) 445 8509
jclark@pyramidbrokerage.com

PAUL B. MACKEY
Real Estate Salesperson
(315) 382 8700
pmackey@pyramidbrokerage.com

JONATHAN T. SAYRE
Associate Real Estate Broker
(315) 736 0856
jsayre@pyramidbrokerage.com

PYRAMID BROKERAGE COMPANY
5786 Widewaters Pkwy.
PO Box 3
Syracuse, NY 13214
(315) 445-1030 • Fax: (315) 445-2074
pyramidbrokerage.com

No warranty or representation, express or implied, is made as to the accuracy of the information contained herein, and same is submitted subject to errors omissions, change of price, rental or other conditions, withdrawal without notice and to any specific listing conditions, imposed by our principals.