

241 Farrell Road

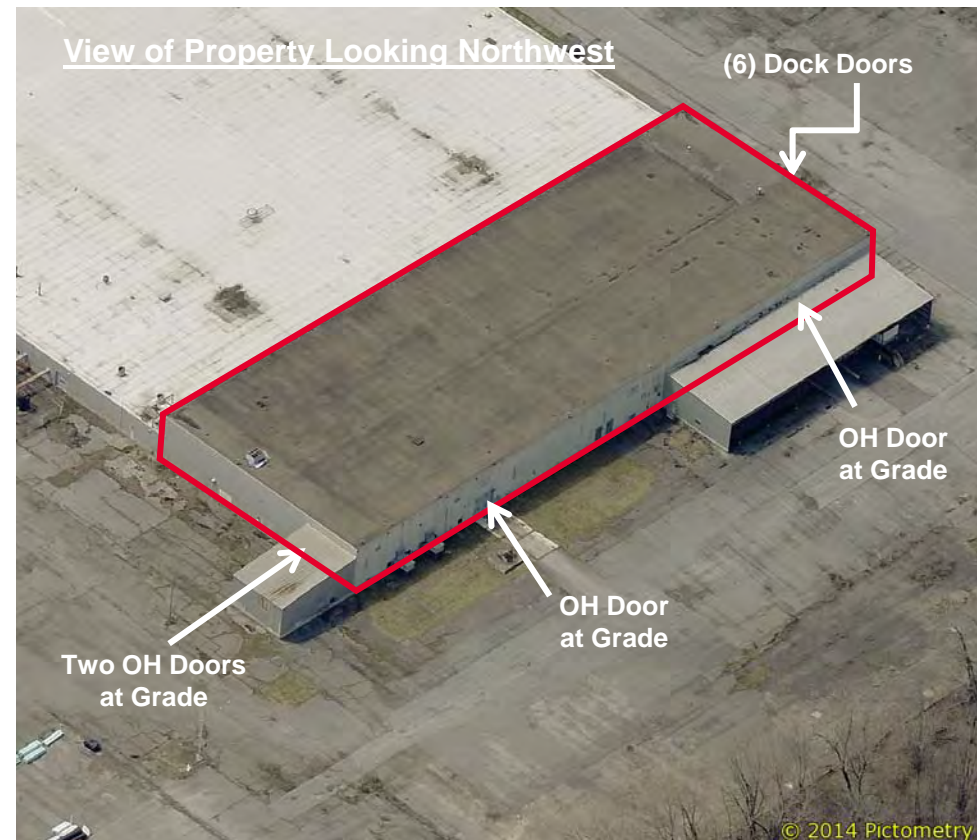
Building 2, Space “A” – Space Information

SECTION II

Space Highlights

- 72,000± SF building footprint referred to as “Building 2, Space A”
- 14,000± SF of mezzanine space (is extra space)
- 35’ clear ceiling height
- 25’ x 40’ column spacing
- (1) 17’ (w) x 18’6” (h) overhead door
- (1) 16’ (w) x 16’ (h) overhead door

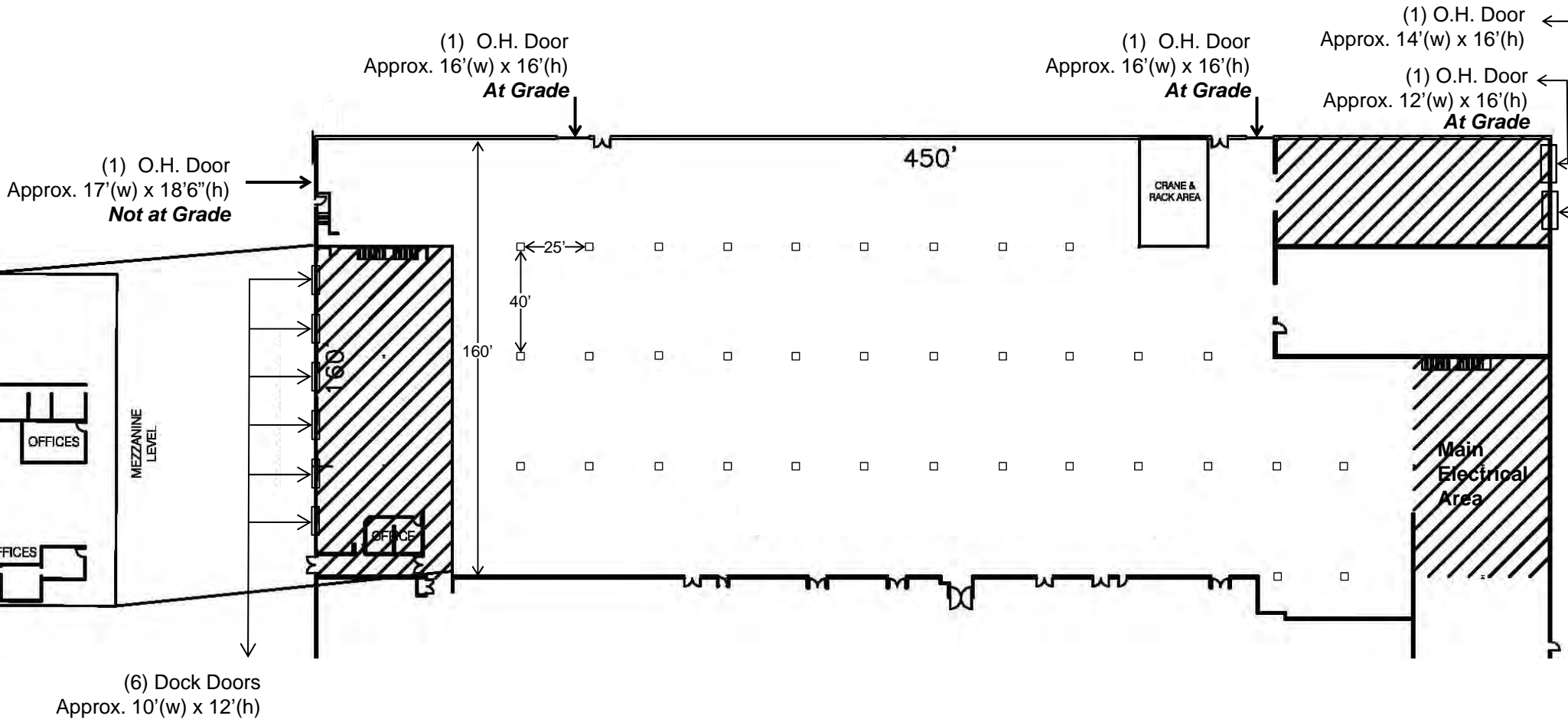
- (6) dock height doors measuring approximately 10’ (w) x 12’ (h)
- 3200A/480V/3 Phase service
- Fully sprinklered
- T12 lighting
- Crane and racking area in place and available



241 Farrell Road

Building 2, Space "A" – Floor Plan

SECTION II



BUILDING 2, SPACE "A"
HIGH BAY AREA
72,000± SF
(DOES NOT INCLUDE 14,000± sf MEZZANINE SPACE)
CEILING 32'± CLEAR
COLUMN SPACING IS 25' x 40'



241 Farrell Road

Building 2, Space "A" – Aerial View



241 Farrell Road

Building 2, Space "A" – Photos

