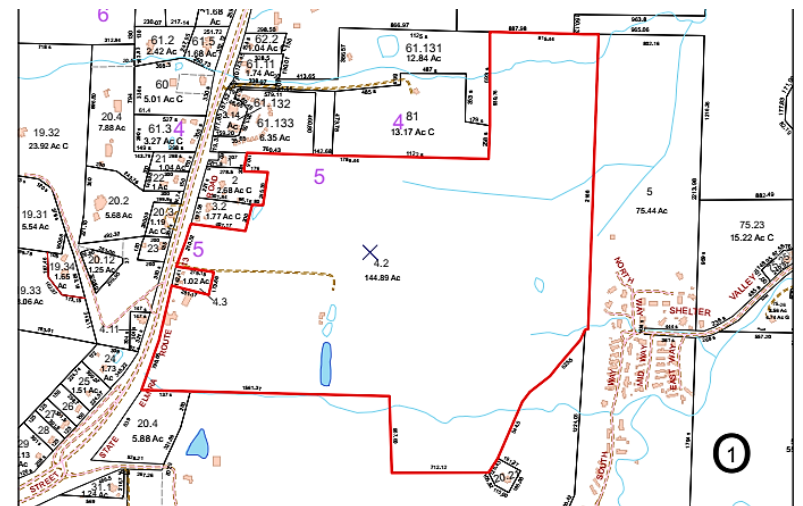


PROPERTY HIGHLIGHTS

- Sprawling 145 acres just 4 miles outside [south] of Ithaca on Elmira Road / NYS Rte. 13 comprised of meadows and woods to include trails, small ponds, stream, and waterfall.
- 1,141' of frontage on Rte. 13.
- Great vista views of hills to east of property.
- Wooded areas offer potential for logging.
- Located on property are several barns and sheds.
- Municipal water available.
- Range of potential uses.
- [CLICK HERE](#) for a video/aerial tour.

LOCATION HIGHLIGHTS

- Ithaca Area has one of the strongest, growing economies in the State "anchored by" educational sector - Cornell University and Ithaca College - plus strong health care, tech & tourism industries.



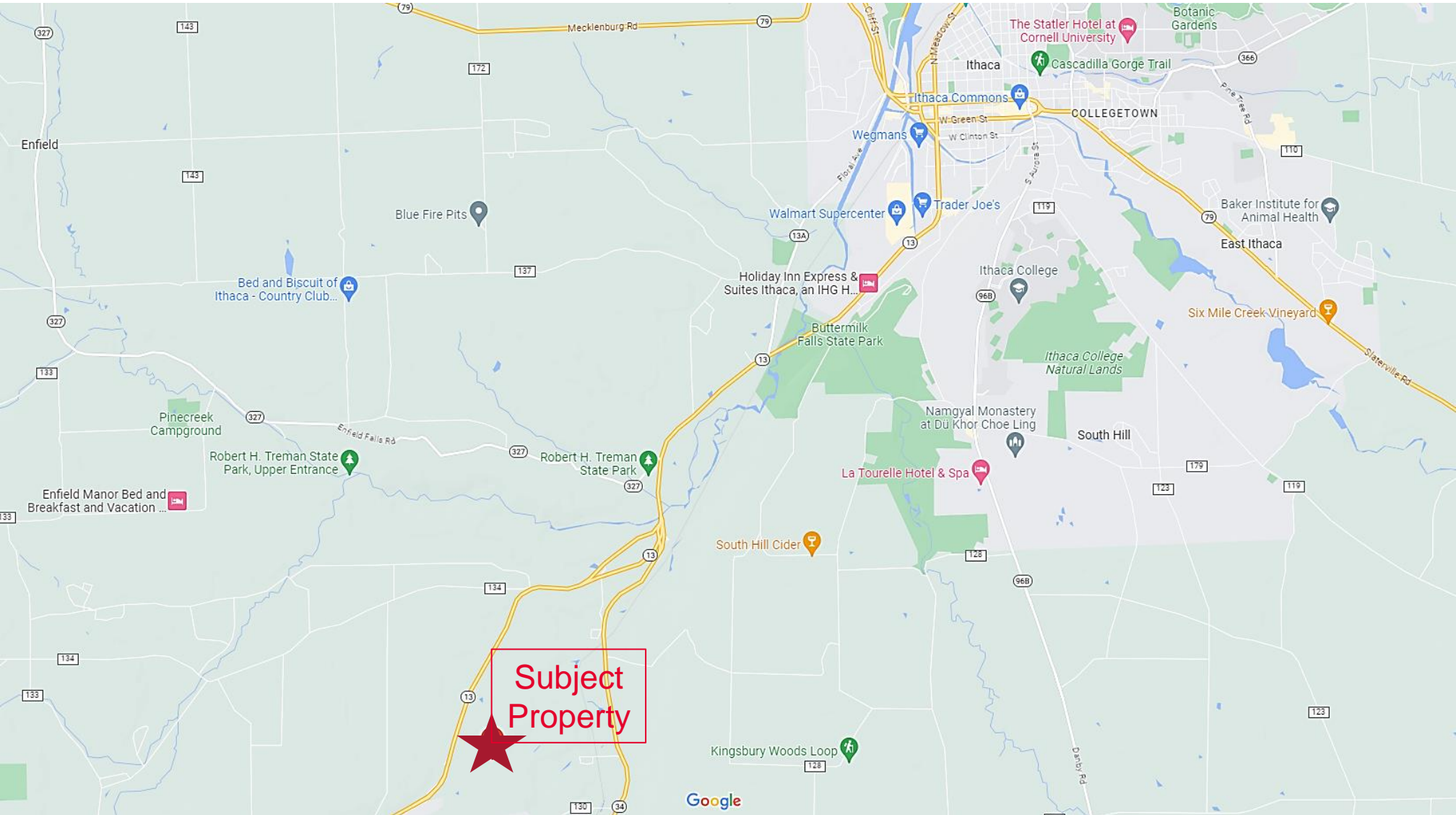
For more information, contact:

David Huckle
Associate Real Estate Broker
607 227 7558
dhuckle@pyramidbrokerage.com

414 East Upland Road, Suite C
Ithaca, New York 14850
phone: +1 607 277-2327

pyramidbrokerage.com

FOR SALE
ELMIRA ROAD
NEWFIELD, NY



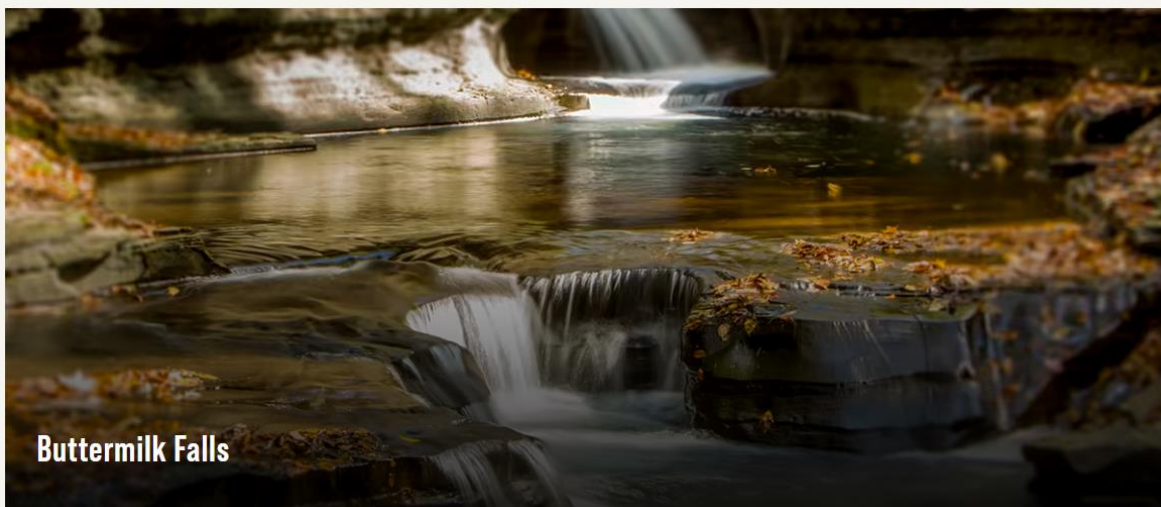
FOR SALE
ELMIRA ROAD
NEWFIELD, NY



FOR SALE
ELMIRA ROAD
NEWFIELD, NY



Nearby Points of Interest



Buttermilk Falls State Park is a 811-acre (3.28 km²) state park located southwest of Ithaca, New York, United States. The falls are a 165-foot cascade and last of 10 waterfalls along the creek. The natural pool, hiking and campground draw tourist from across the Northeast region.



Robert Treman State Park has a swimming area, campgrounds, handsome stonework, and 12 stunning waterfalls.

SOURCE: <https://parks.ny.gov/parks/roberttreman/>