

FOR SALE

Former Immaculate Heart of Mary Campus

425-429 Beechwood Ave, Liverpool, New York 13088



Former Church Campus / Development Opportunity



31,765± SF Total Square Feet on 4.96± Acres

Property Highlights

- Excellent location close to major highways, mass transit and Downtown Syracuse
- Just under 32,000± SF in 5 buildings
- Situated on 4.96± acres / 5 tax parcels
- Frontage on Old Liverpool Road and Beechwood Avenue near signalized intersection
- Zoned R-1 Residential and R-4 Residential
- All utilities
- 194 parking spaces

Traffic Counts

Old Liverpool Road 15,905 AADT

Onondaga Lake Parkway 22,147 AADT

Source: NYS DOT 2019



Convent



Original Church/Community Center



Pantry Building



Rectory/Garage

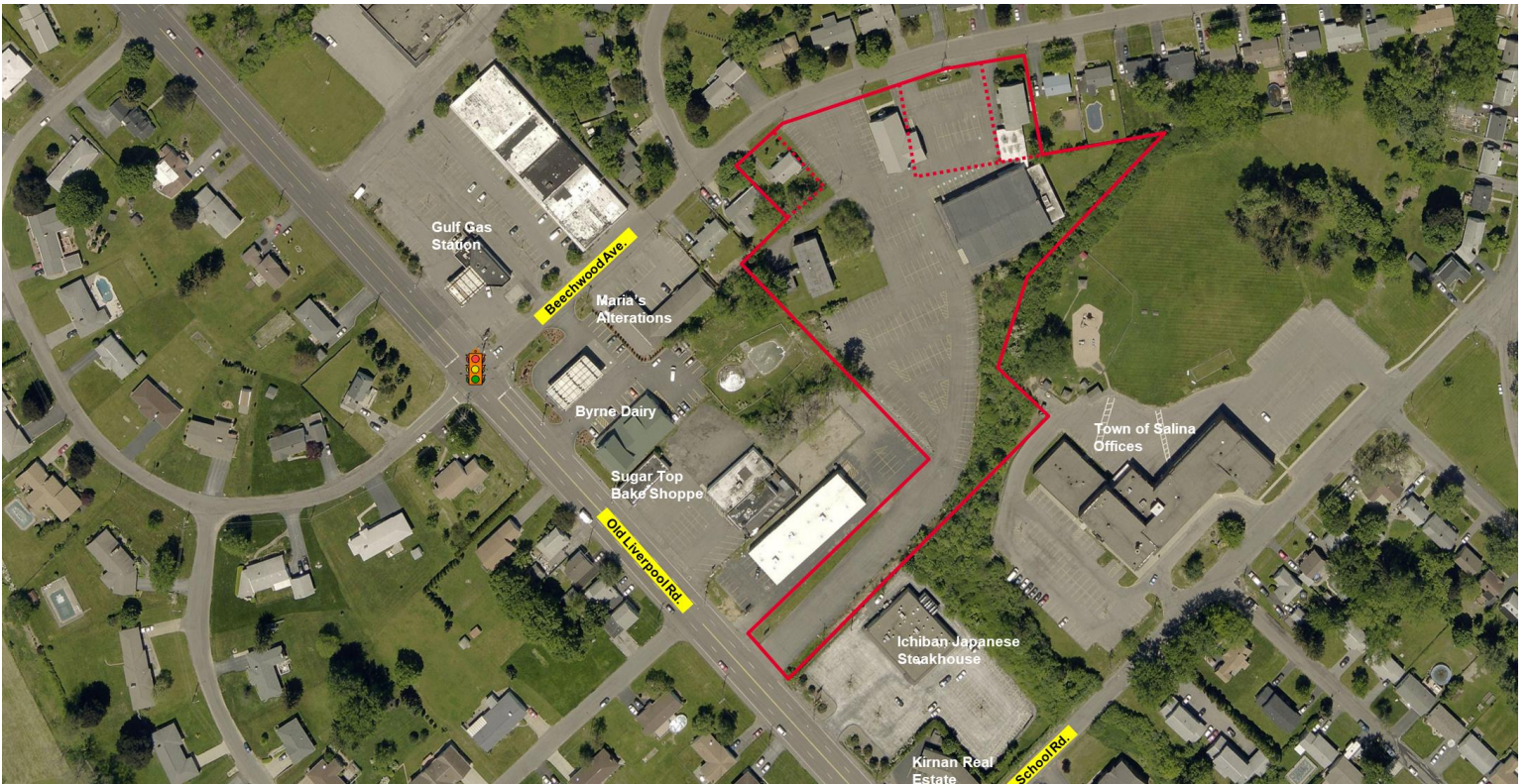
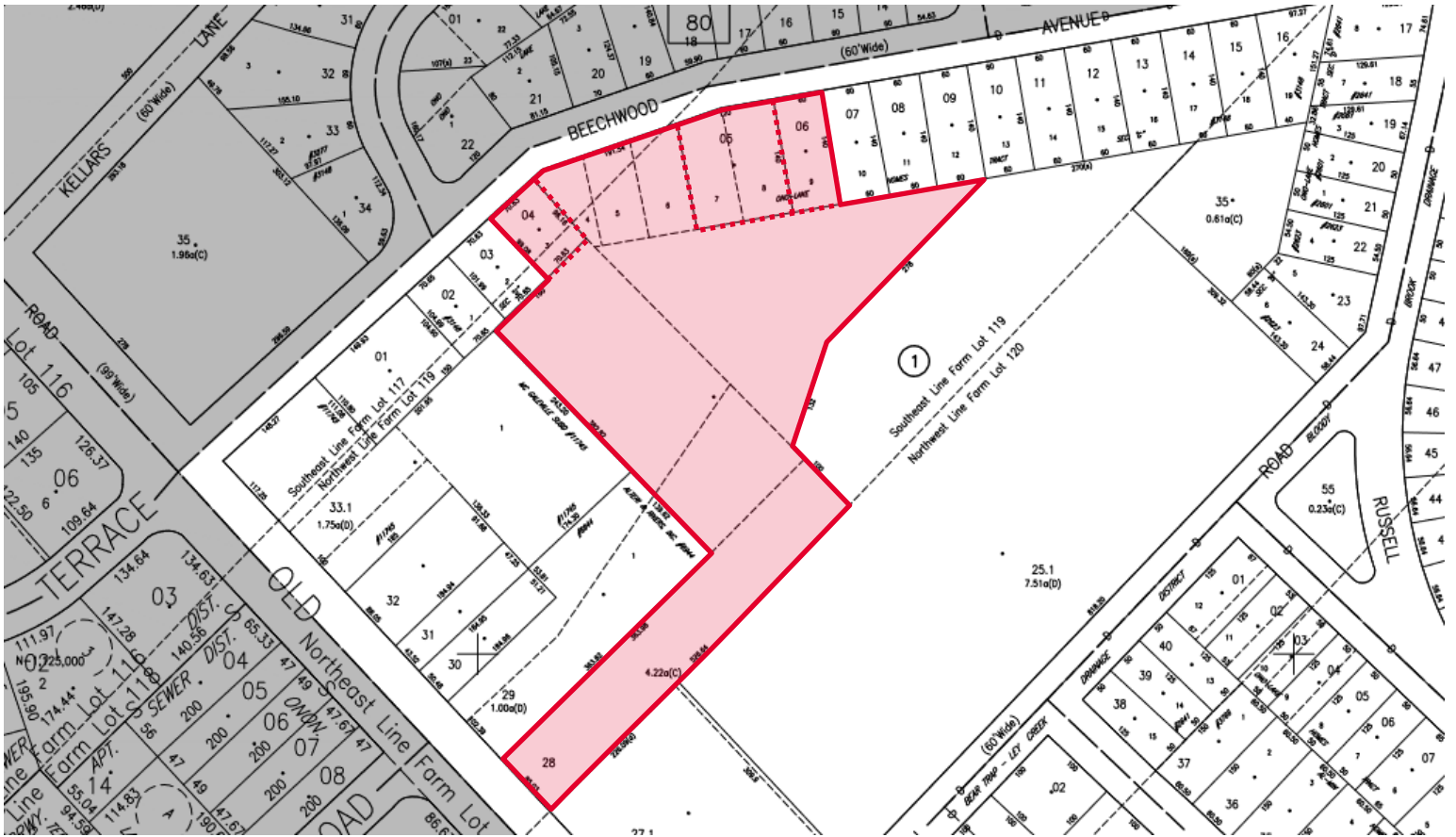
Contact

JOYCE MAWHINNEY MACKNIGHT
Associate Real Estate Broker
+1 315 445 8514
jmacknight@pyramidbrokerage.com

5845 Widewaters Pkwy, Suite 200
East Syracuse, New York 13057
+1 315 445 1030
pyramidbrokerage.com

FOR SALE

425-429 Beechwood Ave. | Liverpool, New York



FOR SALE

425-429 Beechwood Ave. | Liverpool, New York

