

FOR SALE OR LEASE

6826 Collamer Road

East Syracuse, New York 13057



1.96± Acre Development Site

Property Highlights

- Development site on almost 2 acres
- 267± feet of frontage on Collamer Road
- Excellent visibility to I-481
- Around the corner from CNY Film Hub, NexGen Power System, and Saab, Inc
- Across the street from 70,000± SF 481 Sports Center
- Currently has two story residence on site

Demographic	1 Mile	3 Miles	5 Miles
Population	612	10,842	75,431
Households	192	4,800	32,519
Average H.H. Income	\$92,555	\$82,199	\$85,780
Daytime Employees	2,093	22,120	65,968

Source: ESRI Business Analyst 2022

Traffic Counts	
Collamer Road (Route 298)	8,991 AADT
I-481	36,733 AADT

Source: NYS DOT 2019

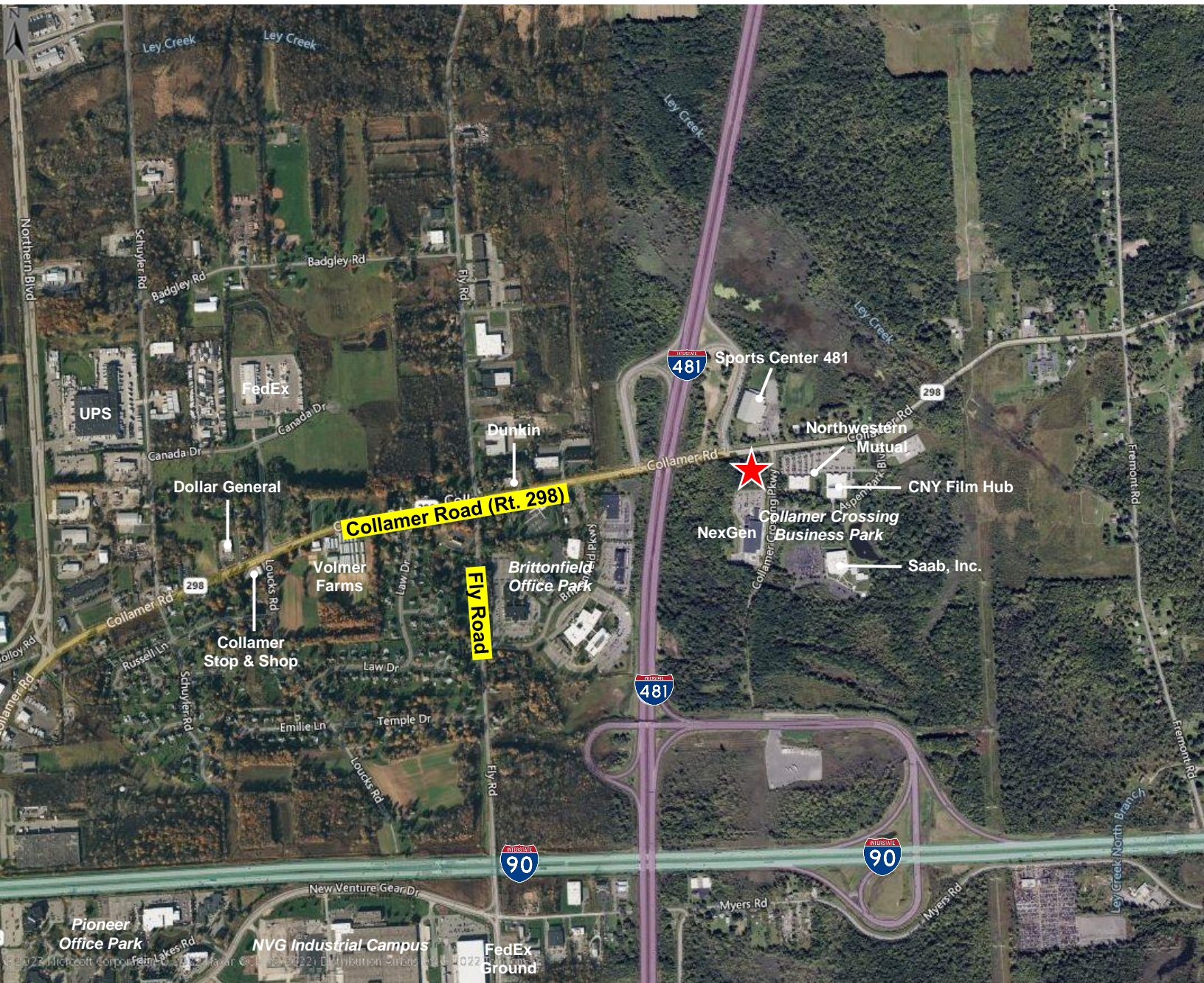
Contact

ELAINA PIRRO
Associate Real Estate Broker
+1 315 445 8520
epirro@pyramidbrokerage.com

5845 Widewaters Pkwy, Suite 200
East Syracuse, New York 13057
+1 315 445 1030
pyramidbrokerage.com

FOR SALE OR LEASE

6826 Collamer Road | East Syracuse, New York

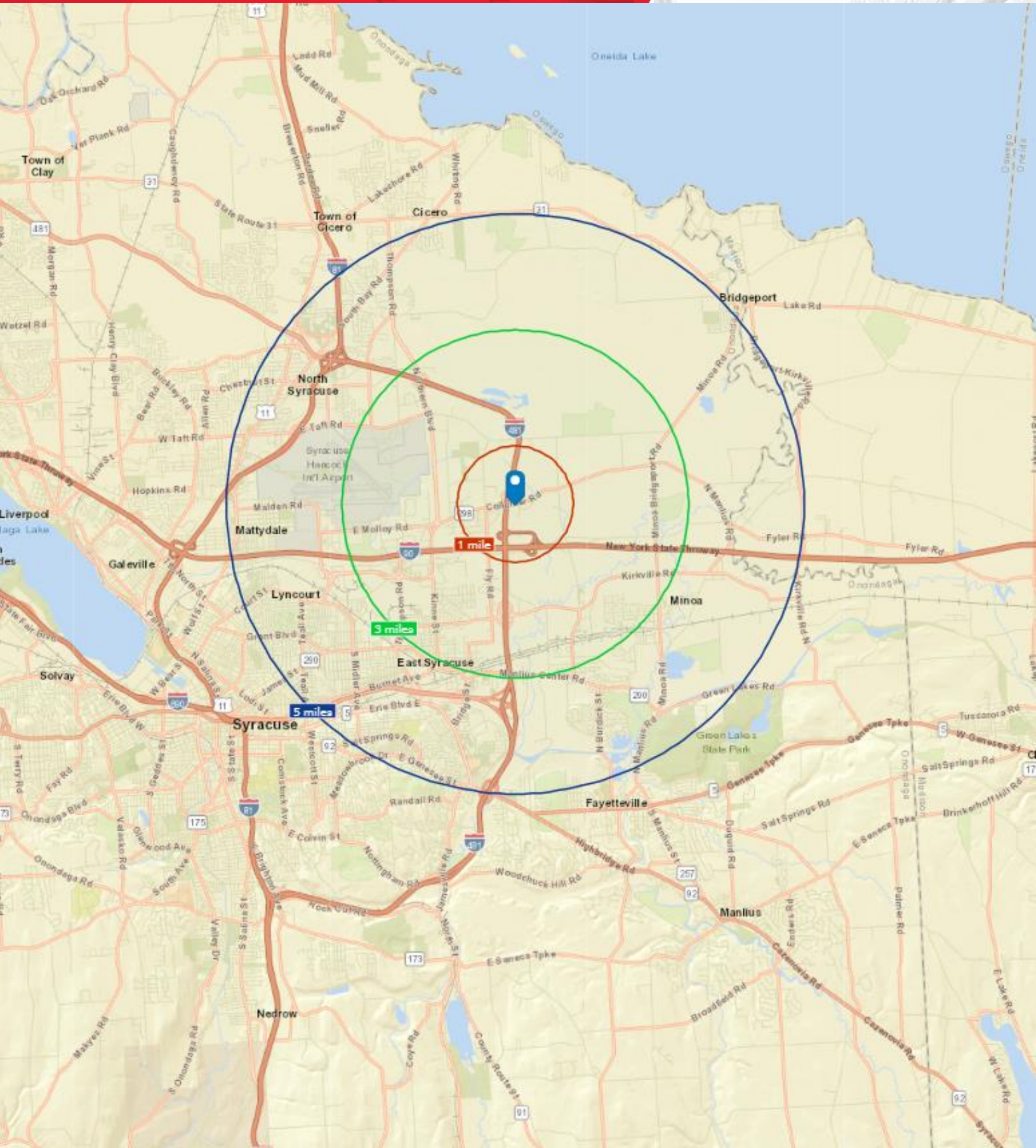


Independently Owned and Operated / A Member of the Cushman & Wakefield Alliance

Cushman & Wakefield Copyright 2022. No warranty or representation, express or implied, is made to the accuracy or completeness of the information contained herein, and same is submitted subject to errors, omissions, change of price, rental or other conditions, withdrawal without notice, and to any special listing conditions imposed by the property owner(s). As applicable, we make no representation as to the condition of the property (or properties) in question.

FOR SALE OR LEASE

6826 Collamer Road | East Syracuse, New York



Independently Owned and Operated / A Member of the Cushman & Wakefield Alliance
Cushman & Wakefield Copyright 2022. No warranty or representation, express or implied, is made to the accuracy or completeness of the information contained herein, and same is submitted subject to errors, omissions, change of price, rental or other conditions, withdrawal without notice, and to any special listing conditions imposed by the property owner(s). As applicable, we make no representation as to the condition of the property (or properties) in question.