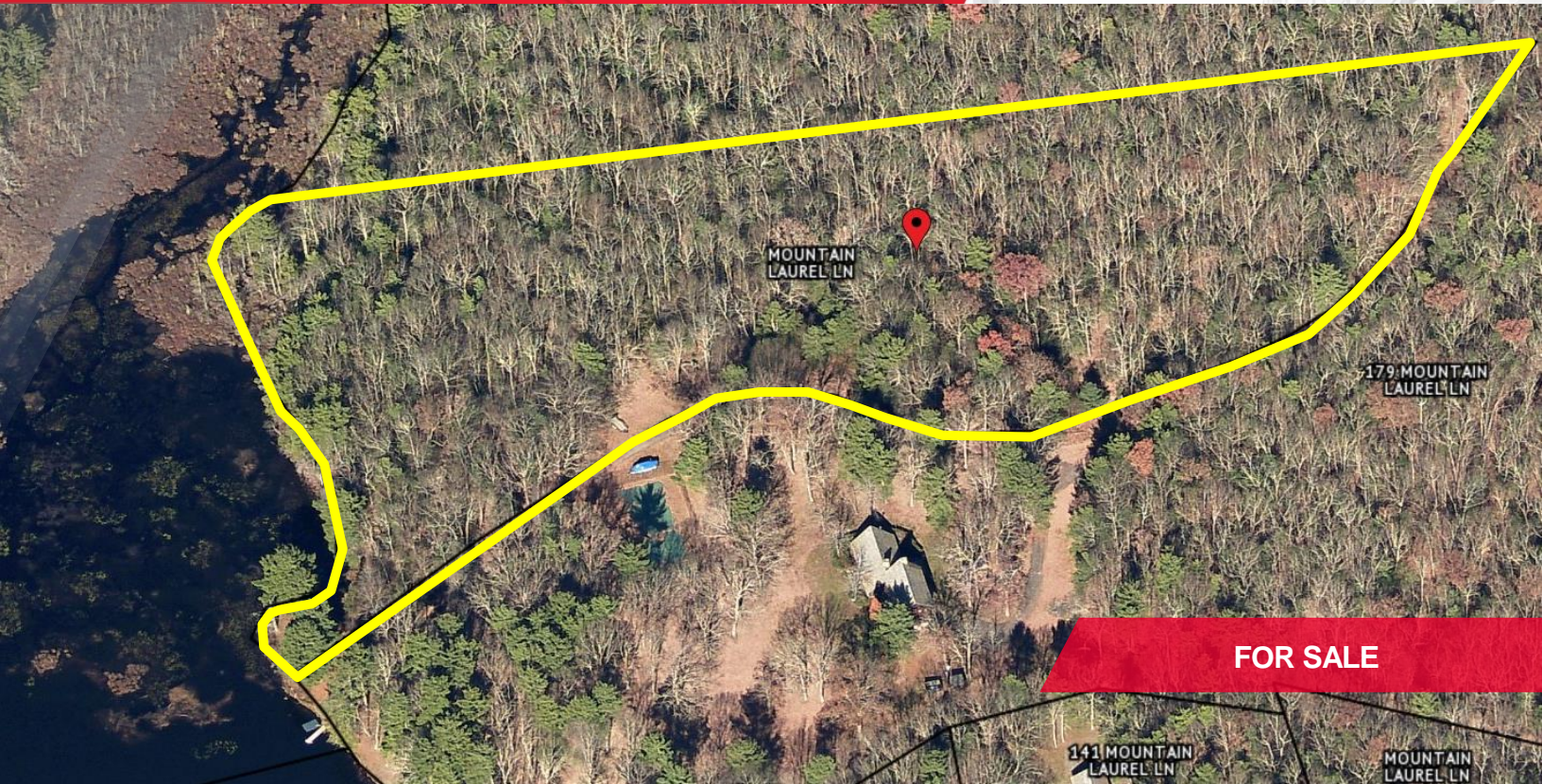


8-ACRE LAKEFRONT PROPERTY ON MOHICAN LAKE

0 Mountain Laurel Lane

Glen Spey, NY 12737 | Sullivan County



±8 ACRE LAKEFRONT PROPERTY with Potential Boat Dock access



AERIAL VIEW OF MOHICAN LAKE



VIEW FROM THE LAKE TO 8 ACRE SITE



VIEW OF LAKE FROM 8 ACRE SITE

Property Details

- 8± acre lakefront building lot
- Lot has direct access on Mohican Lake
- Boat dock permitted by zoning
- Slightly rolling topography
- Located 2 hours from Midtown Manhattan
- Zoned RR -Rural Residential (Zoning regulations available upon request)
- Primary or secondary home building lot with potential to subdivide based on current zoning regulations
- Utilities available: electric , cable

Offered for Sale: \$295,000

Contact

PETER H. MALONE
Real Estate Salesperson
+1 914 213 2863
pmalone@pyramidbrokerage.com

356 Meadow Avenue, 2nd Floor
Newburgh, New York 12550
+1 845 522 5900
pyramidbrokerage.com

8-ACRE LAKEFRONT PROPERTY ON MOHICAN LAKE
0 Mountain Laurel Lane
Glen Spey, NY 12737 | Sullivan County



100 MILE RADIUS