

FOR LEASE

101 Old Cove Road

Liverpool, New York 13088



Donwood Office Park

1,300 – 1,884± SF Office Suites Available

Property Highlights

- Professional single story office buildings
- Beautifully landscaped
- Very accessible and very visible
- Great parking available
- Located less than one mile from I-90
- Nearby amenities include banks, restaurants, pharmacies, grocery stores and coffee shops

Demographic	1 Mile	3 Miles	5 Miles
Population	8,777	46,972	121,474
Households	3,864	20,664	52,470
Average H.H. Income	\$87,607	\$95,687	\$91,674
Daytime Employees	3,482	24,212	62,934

Source: ESRI Business Analyst 2023



Traffic Counts

Oswego Road/Route 57

Source: NYS DOT 2022

Contact

DONALD R. O'LEARY
 Associate Real Estate Broker
 +1 315 445 8515
 doleary@pyramidbrokerage.com

5845 Widewaters Pkwy, Suite 200
 East Syracuse, New York 13057
 +1 315 445 1030
 pyramidbrokerage.com

FOR LEASE

101 Old Cove Road | Liverpool, New York

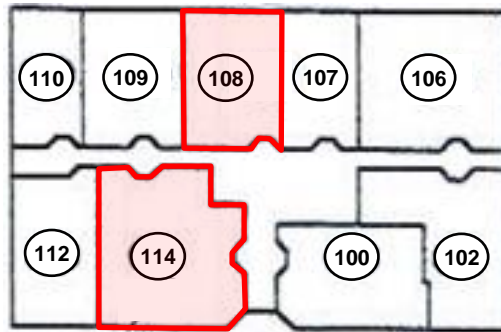
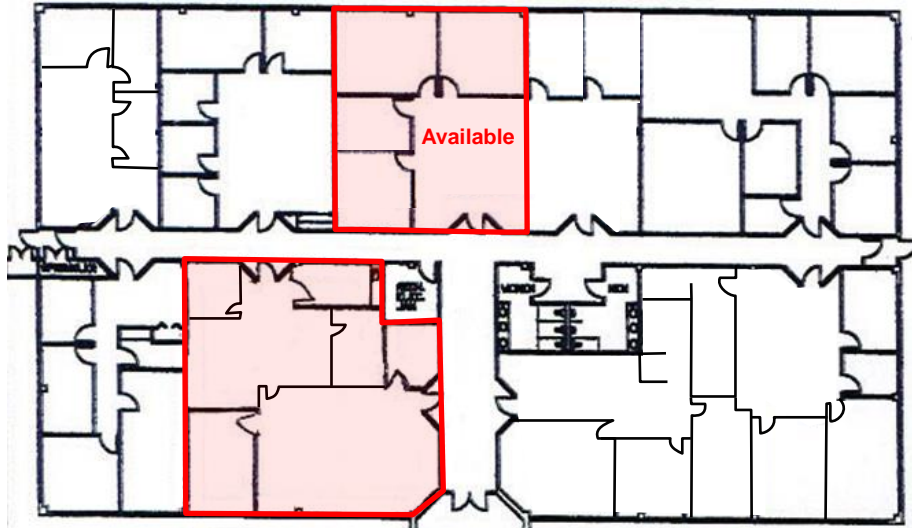


Independently Owned and Operated / A Member of the Cushman & Wakefield Alliance

Cushman & Wakefield Copyright 2022. No warranty or representation, express or implied, is made to the accuracy or completeness of the information contained herein, and same is submitted subject to errors, omissions, change of price, rental or other conditions, withdrawal without notice, and to any special listing conditions imposed by the property owner(s). As applicable, we make no representation as to the condition of the property (or properties) in question.

FOR LEASE

101 Old Cove Road | Liverpool, New York



Suite 100	1205 SF
Suite 102	1530 SF
Suite 106	1880 SF
Suite 107	800 SF
Suite 108	1300 SF
Suite 109	1280 SF
Suite 110	851 SF
Suite 112	1139 SF
Suite 114	1884 SF

FOR LEASE

101 Old Cove Road | Liverpool, New York

