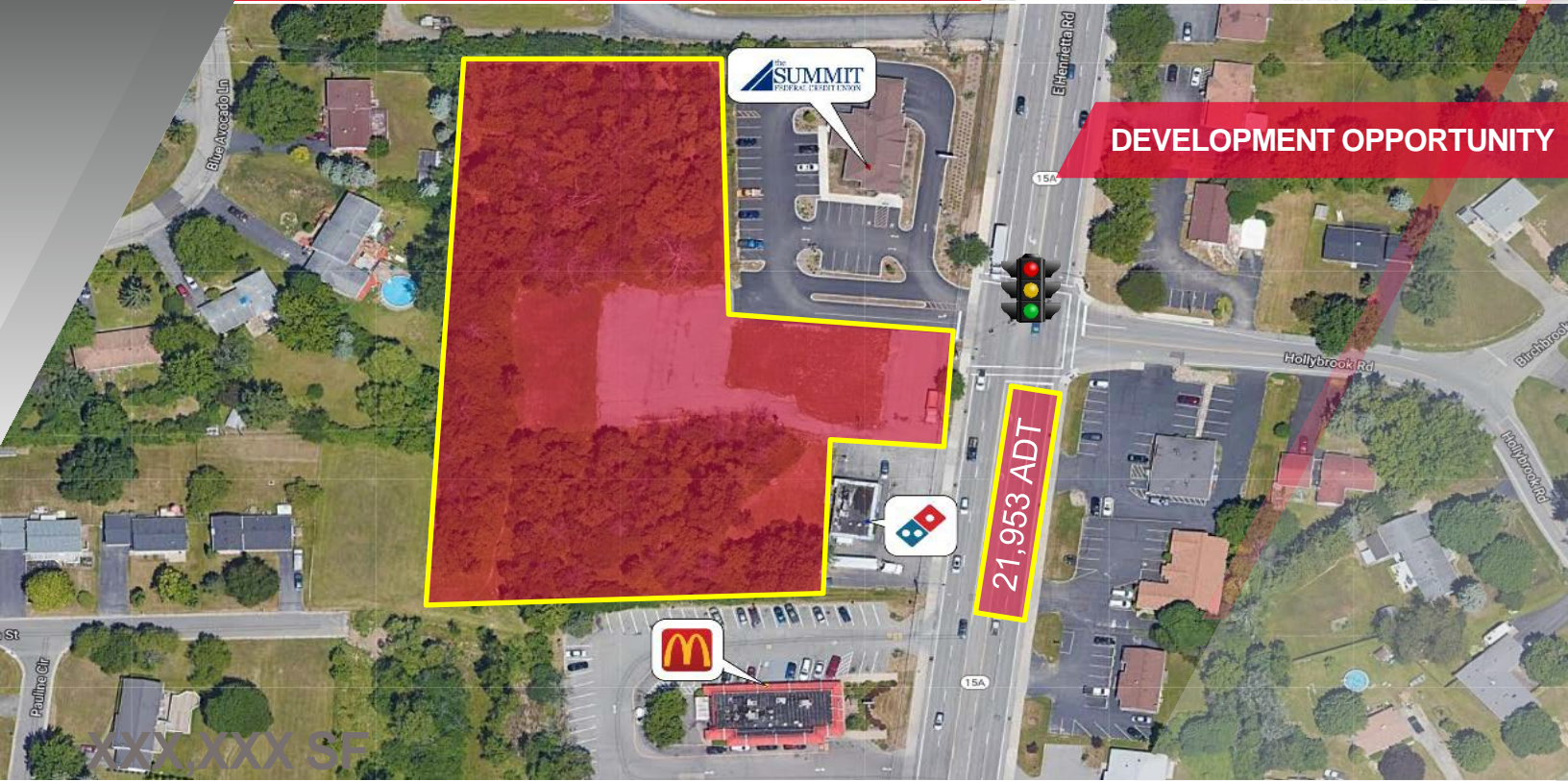


FOR SALE OR LEASE

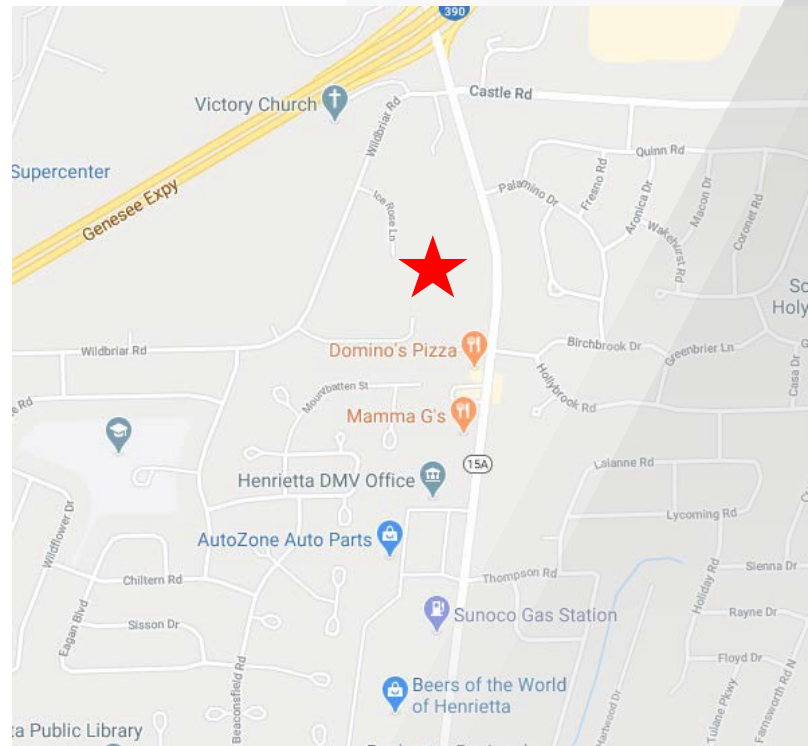
East Henrietta Road

Henrietta, NY



Property Highlights

- Development site with signalized access to E. Henrietta Road
- 2.98 Acres, can be subdivided.
- Adjacent to Summit FCU
- Located ½ mile south of I-590 exit to E Henrietta Rd and ½ mile north of Calkins Rd
- Nearby retailers include Wegmans, Starbucks, Walgreens, McDonald's, Tim Hortons, NYS DMV



Demographic	1 Mile	3 Miles	5 Miles
Population	45,164	146,461	297,570
Households	18,216	58,563	121,426
Average H.H. Income	\$87,323	\$87,428	\$77,288
Source:	ESRI		

Contact

Christopher D. Giunta
 Real Estate Salesperson
 +1 585-248-9426 x 327
cgiunta@pyramidbrokerage.com

David Joseph Angie
 Real Estate Salesperson
 +1 585-248-9426 x 333
dangie@pyramidbrokerage.com

370 Woodcliff Drive, Suite 210
 Fairport, New York 14450
 +1 585 248 9426
pyramidbrokerage.com

FOR SALE OR LEASE
Henrietta, NY



Market Aerial