

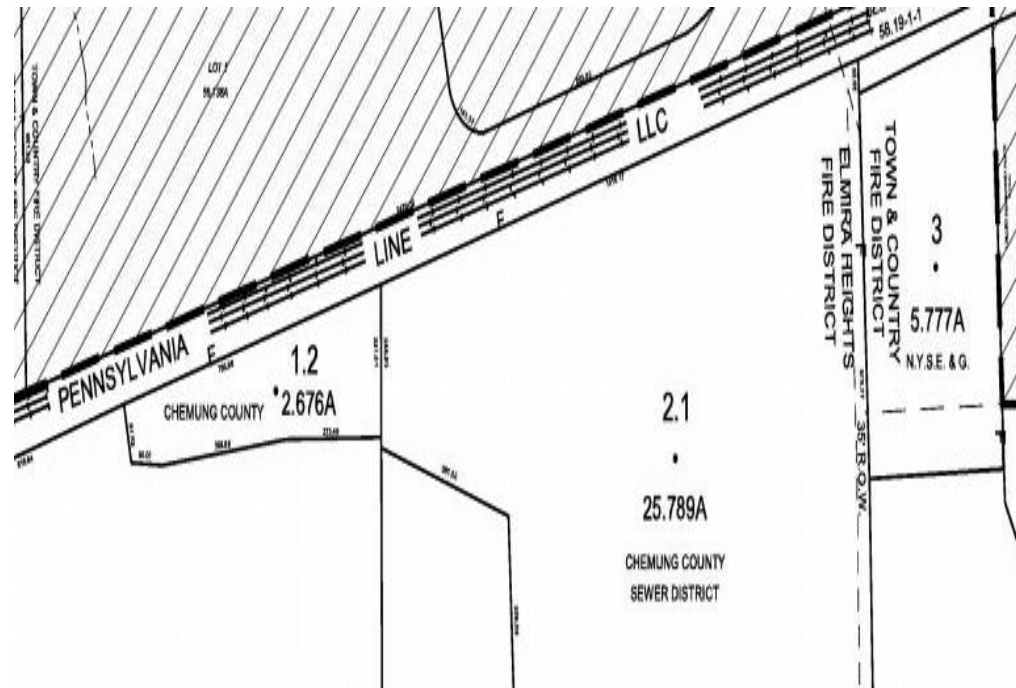
Industrial Acreage Available in Horseheads, NY

Property Highlights

- 28.38 acres of land located on dead end portion of West Philo Road
- Has 10" water line and 8" sewer line and borders NYSEG substation
- Includes tax parcels 1.2 & 2.1 as shown on tax map
- Existing structures are not usable and will need demolition
- Great private location for any type of manufacturing or industrial use
- Manufacturing zoning
- Potential incentives from Empire State Dev. and Chemung County IDA

Location Highlights

- Located near numerous businesses such as Elmira Structures, Erie Materials, Gerber Collision, & Cook Brothers
- Minutes from Miracle Mile (Route 14) and I-86



For more information, contact:

Michael J. Manzari, CCIM, SIOR
 Real Estate Broker
 607 937 9720 ext. 301
mmanzari@pyramidbrokerage.com

8 Denison Parkway East, Suite 401
 Corning, New York 14830
 phone: +1 607 937 9720

pyramidbrokerage.com