

FOR LEASE

2921 Erie Boulevard East

Syracuse, New York 13224



New Owner!! Willing to Subdivide and Renovate



Up to 6,685± SF Office/Retail/Flex Space Available

Property Highlights

- First floor: 6,685± SF
- Neighboring tenant is Empire Visionworks and VedaLeaf dispensary
- Convenient access to I-690
- Zoned Industrial in the City of Syracuse
- 120+ cars parking available
- Excellent visibility and signage on Erie Blvd East
- Raw space ready for buildout
- Pylon signage available
- Can be subdivided to fit tenant needs

OWNED &
MANAGED BY:



Contact

CHRISTOPHER SAVAGE
Real Estate Salesperson

+1 315 445 8519

csavage@pyramidbrokerage.com

Demographic	1 Mile	3 Miles	5 Miles
Population	11,631	95,742	193,059
Households	4,699	38,383	78,603
Average H.H. Income	\$76,448	\$68,966	\$66,753
Daytime Employees	5,335	61,885	138,000
Source: Sites USA; Applied Geographic Solutions 2021			

Traffic Counts	
Erie Boulevard East	17,201 AADT
Thompson Road	21,904 AADT
Source: NYS DOT 2019	

FOR LEASE

2921 Erie Boulevard East | Syracuse, New York

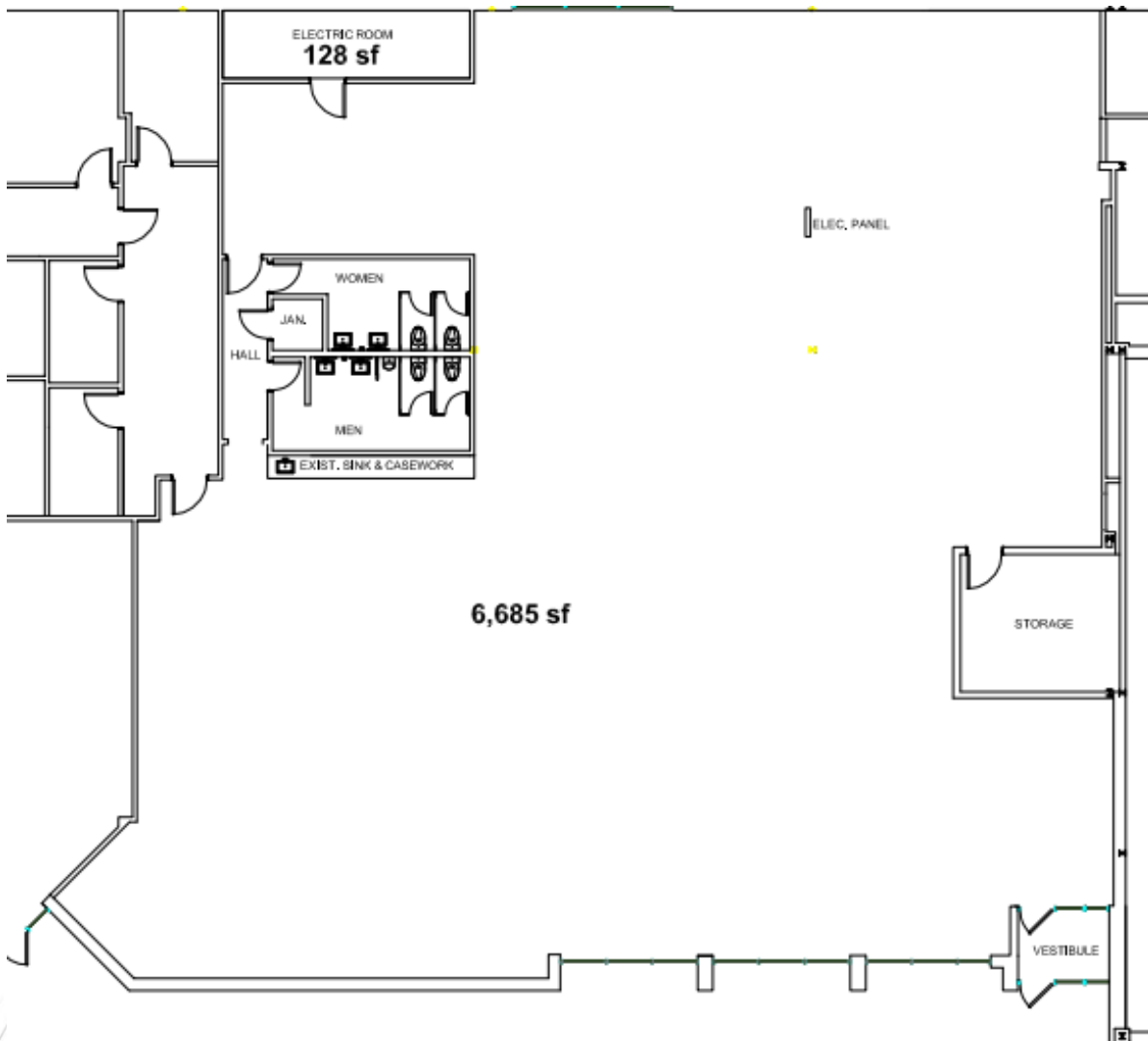
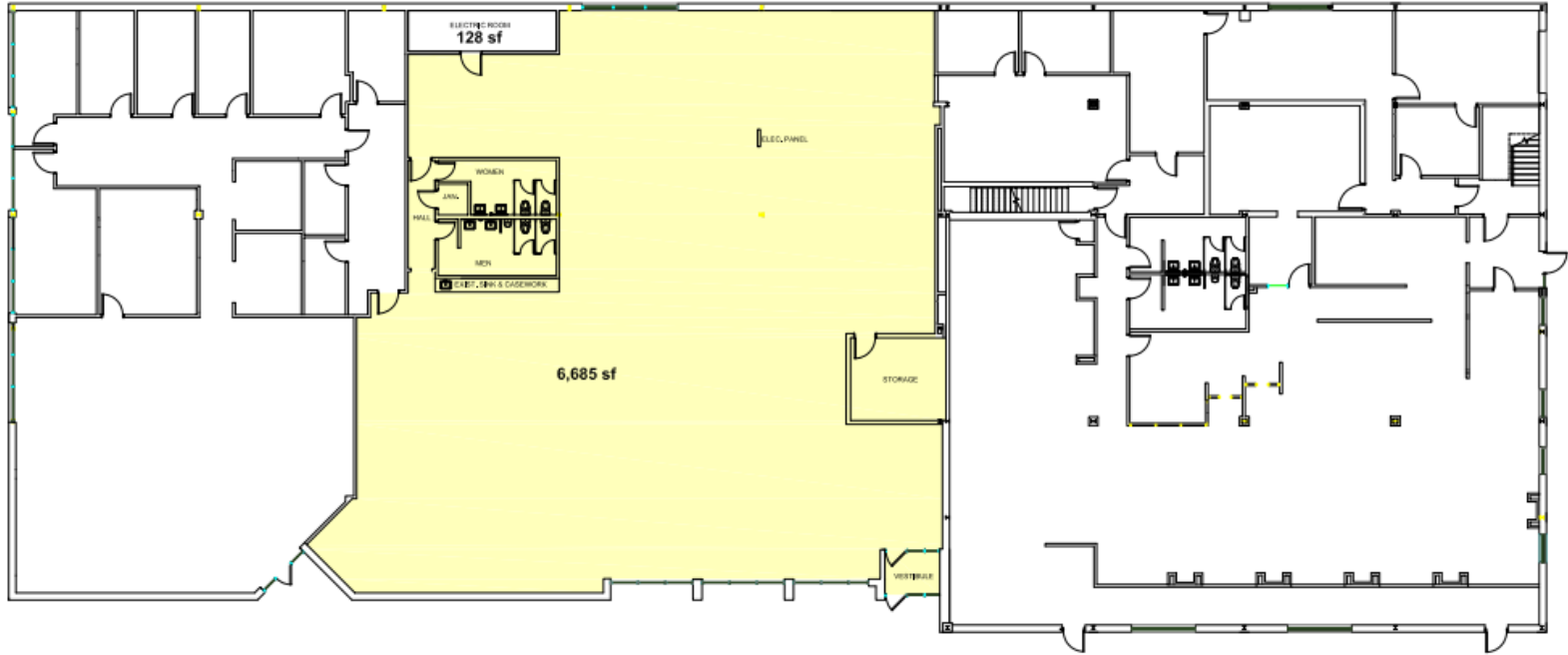


Approximate plot lines subject to verification of survey.



FOR LEASE

2921 Erie Boulevard East | Syracuse, New York



Independently Owned and Operated / A Member of the Cushman & Wakefield Alliance

Cushman & Wakefield Copyright 2022. No warranty or representation, express or implied, is made to the accuracy or completeness of the information contained herein, and same is submitted subject to errors, omissions, change of price, rental or other conditions, withdrawal without notice, and to any special listing conditions imposed by the property owner(s). As applicable, we make no representation as to the condition of the property (or properties) in question.

FOR LEASE

2921 Erie Boulevard East | Syracuse, New York



Entrance Storefront



Space Gutted – Ready for Buildout

Independently Owned and Operated / A Member of the Cushman & Wakefield Alliance

Cushman & Wakefield Copyright 2022. No warranty or representation, express or implied, is made to the accuracy or completeness of the information contained herein, and same is submitted subject to errors, omissions, change of price, rental or other conditions, withdrawal without notice, and to any special listing conditions imposed by the property owner(s). As applicable, we make no representation as to the condition of the property (or properties) in question.